



Maryland Pastel Society Spring Newsletter

In This Issue

[From the President's Easel](#)

[Next Meeting Info](#)

[Upcoming Workshops](#)

[Upcoming Exhibitions](#)

[Featured Artist](#)

[Member News](#)

[New MPS Members](#)

[Past Events](#)

MPS Board & Volunteers

Pres: Dawn Capron

VP: Bob Borrell

Treas: Mary Anne

Warner

Corr.Sec: JoEllen

Murphy

Rec.Sec: Barbara

Steinacker

Membership: Maria

Marino

Workshops: Joyce

Lister

Web: Deborah

Maklowski

Planning Calendar

Apr 18 & 19: Diana De
Santis workshop

Apr 20: Next meeting

May 15: Summer
deadline to apply for
Signature Membership

May 31: Arts Barn show
opens

Jun 11: Arts Barn
reception

Jun 29: Next Board
meeting

Jul 20: MPS Summer
meeting

Jul 27: Arts Barn show
closes

Aug 1: Deadline to apply

April 2013

Dear Deborah,

Welcome to the new MPS newsletter! After careful thought (and a lot of hints from our members!), we are transitioning our quarterly newsletter from a series of articles posted on our website to an email-based newsletter. We hope you like it!

From the President's Easel

Spring has arrived in the area with hints of color and promises of a lively palette. Our plein air artists are dusting off their gear and checking out online catalogues. Although, it must be said, that throughout the winter months, hardy groups with easels have been sighted braving the elements.

New Newsletter Format

The warm breezes are bringing a fresh look to the Maryland Pastel Society newsletter. It's still coming to you quarterly, but arriving in an email, independent of our website. Thanks to the efforts of Deborah Maklowski, the newsletter has all the MPS news about shows, exhibits, and upcoming meetings as before but in this exciting and easy to access format.

One endangered section of the newsletter is the "Featured Artist." At each meeting and in each of these letters we ask for volunteers from among our Signature Members to be the "Featured Artist." They are scarce as the proverbial hens' teeth. Louise Rudy is featured this quarter...thank you, Louise! We're so happy and proud to feature you. However, given the uncertainty of future volunteers, we have decided to use the website's home page to display images drawn randomly from those posted on our Signature Members' gallery pages. These will change with each new login (we hope) and will keep our home page fresh and interesting.

Our MPS Website is changing in other ways, as well. Deborah, one hard working lady, has been applying her tech talents to make it more user-friendly and easier to navigate. Watch for the changes. You'll like them.

Next Meeting

Diana DeSantis to Demo: Saturday, April 20, noon to 4pm

Our Saturday, April 20 General Meeting at Glenwood is definitely not to be missed! Diana DeSantis will be our presenter. She will do a demonstration of a landscape painting. To quote from the flyer Joyce Lister developed,

"Diana's artwork and articles have been featured in numerous art books and magazines, and her paintings have earned 15 gold medals and over 200 awards in prominent national and international shows. Her landscapes were on exhibit at the Hermitage in St. Petersburg and other European museums. Diana is an IAPS Master Pastelist and a Signature Member of the PSA and Knickerbocker Artists, among other

for the 2013 *Shades of Pastel*

Sep 23-27: Lorenzo Chavez workshop

Directions to Glenwood

[Directions to our meetings at the Gary J. Arthur Community Center at Glenwood](#)

art organizations."

There will be a brief business meeting starting at noon. Diana's presentation will start about 12:30 and end about 3:30, with a break when she's ready.

Bring a recent painting to show off, a lunch, and refreshments to share that will qualify you for a door prize.

See you on Saturday, April 20.

Happy Painting.

Dawn

Upcoming Workshops

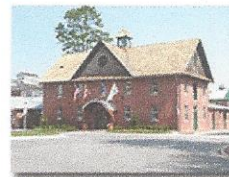
The 2-day indoor landscape workshop with **Diana DeSantis** (April 18-19, before the next members' meeting) is full, but you can email [Joyce Lister](#) if you'd like to be added to the waiting list.

The big news is that we are bringing **Lorenzo Chavez** to Baltimore County in September for a 5-day plein air workshop. Lorenzo -- who doesn't come east all that often! -- is a highly sought-after instructor and a very talented plein air pastelist, so you will want to secure your place in this workshop soon. Details and the registration form are posted on our website: just click [here](#)!

Upcoming Exhibitions

We're looking forward to the next Signature Members' show coming up at the Arts Barn in Gaithersburg. The show opens on May 31, with the artists' reception set for **Tuesday, June 11, from 7:00 to 8:30pm**. The address is 311 Kent Square Road, Gaithersburg, MD. Hope to see you there!

And don't forget that this year we will be holding our national juried show, *Shades of Pastel*, in November at the Delaplaine Visual Arts Center in Frederick. Deadline for entry isn't until August 1, so you have plenty of time to paint that masterpiece!



Arts Barn

Featured Artist

Louise Rudy

My interest in art has been life long, cultivated early on by my mother who provided me with paintbrushes from the time I could hold one. At the same time she encouraged my imagination. On summer days we would lie on the grass and describe the forms we could make out in the changing clouds.

I spent my youth admiring, learning, and sometimes copying art that moved me. Now, as I get older and more experienced, my sense of what to pursue or discard gets more finely tuned, as does my appreciation for the state of not knowing exactly what I am doing, just that I should be doing it. This extends to every aspect of my journey, in and out of the studio, and I have come to depend on my art to help direct and disclose my path through life.



For the past four years I have focused on the figure, and attend figure drawing sessions with a model at Hood College. This drawing practice has been most beneficial, as I believe if one can draw the figure, one can draw anything. When I draw people I am not trying

to show who they are, but rather am trying to discover who they are. I love drawing, and for me pastels are so satisfying and direct. I appreciate the feel of holding them and the various marks they are capable of making.



I am fortunate to have a studio at the newly opened Griffin Art Center in Frederick, Maryland. It's a pleasure to interact with the other resident artists, and having these friends nearby when I am working creates such wonderful positive energy.

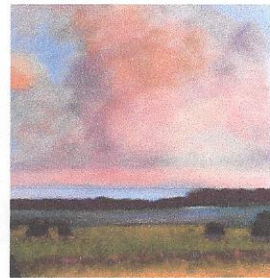
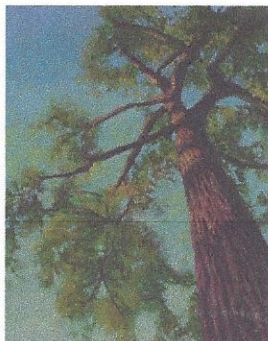
My work can be seen at <http://louisedeanrudy.blogspot.com>.

Don't forget! Signature Members may sign up to be a Featured Artist by sending an email to [JoEllen Murphy](mailto:JoEllen.Murphy).



Member News

Congratulations to MPS members **Joyce Lister** and **Susan Klinger**, who have been juried in as new PSA Signature Members, and to **Michael McGurk** and **Gretchen Moyer**, juried in as PSA Associate Members!



Cathy De Lorimier

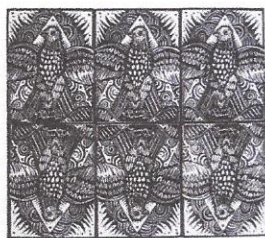
Cathy exhibited four paintings in the Women's Club of Chevy Chase 38th Annual Art Show and Sale April 5-7, 2013. She was awarded a 2nd place ribbon for her painting, "Favorite Tree at Sunset" by juror David Daniels. Please visit her website at deLorimierStudio.com.

Susan Klinger

In addition to being elected to Signature Member status in the Pastel Society of America, Susan had one of her pastels juried into the 9th Annual Northeast National Pastel Exhibition to be held in Old Forge, NY - May 4 to June 29, 2013.

Eve Miler

Eve had two paintings, "Low Tide" and "Dataw Island," juried into the Southeastern Pastel Society's 2013 Member Exhibition, while "Dataw Island Spring" was juried into the Northwest Pastel Society's 27th Annual International Open Exhibit.



Gretchen Moyer

Gretchen's linocut "Spiritus Sanctus" was accepted into 34th Bradley International Print and Drawing Exhibition. March 9 - April 20, Bradley University Galleries, Peoria, IL.



Grace Newcomer

Grace received a First Place award in the pastel category at the Montgomery Village Foundation 39th Annual Art show in March. This month, Grace entered paintings in the Women's Club of Chevy Chase's annual art show and received a Third Place award for "Attitude" in portraits and an Honorable Mention for a snowscape, "Afternoon Delight."



Susan Due Percy

Susan is part of the Countryside Artisan Studio Tour, April 19, 20, and 21. Hours are Friday and Saturday, 10 - 5 pm and Sunday, noon - 5 pm. Her studio is Sugarloaf Studio, at 21900 Beallsville Road, Barnesville, MD 20838. Map and additional information: www.countrysideartisan.com.



Barbara Steinacker

Barbara is the recipient of the Pastel Award for her pastel painting, "Bombay Hook NWR Autumn-5" in the April show at The Art League Gallery in the Torpedo Factory Art Center. The award is given once a year in memory of Carol Bruce, who had a studio at the Torpedo Factory and was an MPS member. The show runs from April 3 - May 6, with reception on Thursday, April 11, 6:30-8:30 p.m.



Rob Talbert

Rob has had two paintings accepted into the Northeast National Pastel Exhibit in Old Forge, NY. The paintings, "Cousins" and "The Red Gate," will be on display at View in Old Forge from May 4 to June 29, 2013.

Dolores Andrew will teach a workshop, "Painting Water in Pastel," for the Rehoboth Art League. The class runs July 22-24, from 9:30 AM to 12:30 PM each day and will be held at the Art League (12 Dodds Lane, Rehoboth Beach), although actual venues will vary each day. Call 302-227-8408 or email rehobothartleague.org for more information.

The Old Print Gallery in Georgetown recently accepted eight additional works on paper by **Philip Bennet**, many of which were shown at the April 6 and 7 Capital Art Fair at the Holiday Inn in Rosslyn, VA. His new work at the Gallery, monotypes, an acrylic and a watercolor over gesso, can be viewed at www.oldprintgallery.com.

Along with seven other artists, **Peggy Emmons** will be participating in an Open Studio on Saturday, April 20, from 10 to 5 and on Sunday, April 21, from 12 to 5 at 905

Elizabeth Street, Havre de Grace, MD. Anyone interested in more information may call Peggy at 410.877.0645.

Laverne Hammond's painting "Ferry Point Park" was accepted into "Less is More: Small Works in a Great Space" at the Mitchell Gallery at St. Johns College in Annapolis. The show opens May 29 and runs through June 19, 2013.

Jean Hirons' paintings of architecture in the landscape are featured in the Spring 2013 issue of *Pastelagram*, the magazine of the Pastel Society of America. In addition to her recently published book, *Finding Your Style in Pastel*, Jean has a new blog: Finding My Style at www.jeanhironsblog.com/

Deborah Maklowski had two colored pencil drawings accepted into the Mitchell Gallery's first annual national small works show, "Less is More: Small Works in a Great Space," which runs from May 29 to June 19. Deborah also won first place at the annual meeting of the Mid-Atlantic Plein Air Painters' Association for a plein air pastel produced in the morning, before the start of the meeting.

Lisa Mitchell is currently participating in the Washington Society of Landscape Painters' Centennial Exhibition at the Washington Arts Club in D.C. The show closes April 27, 2013. Follow this link to see the on-line exhibition: [WSLP Centennial Exhibition](#). Lisa has also been juried into the following spring/summer plein air events: [Easels in Frederick](#), [Plein Air Richmond](#) and [The Wayne Plein Air Festival](#). She is teaching two pastel and/or oil painting classes at the Zoll Studio of Fine Art in Lutherville, MD. Monday's class, "Studio Time," is from 1 p.m. - 4 p.m., and Tuesday's class, "From Plein Air to the Studio," is from 9:30 a.m. - 12:30 p.m., with additional plein air trips thrown in just for fun! Visit Lisa's web site: [Lisa Mitchell Studio](#), [Instruction](#) or the [Zoll Studio](#) web site for more information on these two classes.

Pastel artist **Mary Montague Sikes** will present an all-day workshop, "Pastels Bright and Free," at the Art Education Center of This Century Art Gallery, Williamsburg, VA, on Saturday, May 4, 9 a.m. to 4 p.m. The workshop is for all levels. Here is additional information from This Century Art Gallery's web site: http://www.thiscenturyartgallery.org/classes_adult.cfm?classes=classes&class_term=Spring&class_year=2013&class_group=adult

Renata Vaccari was awarded first prize in the Women's Club of Chevy Chase's annual art show, for a pastel that subsequently sold.

Welcome to New Members

We're thrilled to welcome new members Janet Hallahan, Karen Richburg, and Gretchen Moyer!

Past Events

Danni Dawson's Portrait Demo at our January Meeting

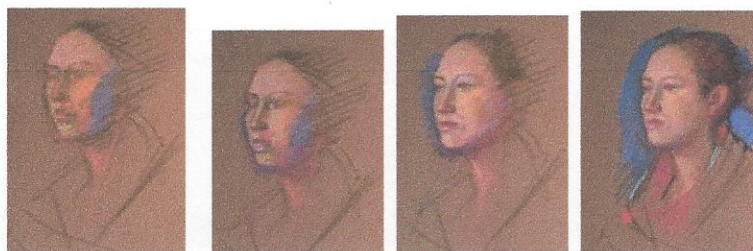
Danni Dawson is an acclaimed portrait and still life artist and teacher and it was a treat to watch her do a portrait demo at our last General Meeting. She did this portrait on Fabriano Roma paper and began her quick drawing using Girault pastels.

In executing a portrait Danni does not draw a lot but concentrates on blocking shapes. She indicates the axis line and the eye line, as well as the placement of the nose, mouth and chin, and the basic planes of the face. She then proceeds to apply pastel.



Beginning with bright colors Danni indicates the flow of light on the head and the shadows on the face. She glazes skin tones on top of the bright colors to neutralize them. The result provides a glow from underneath. She works around each structure of the head to develop it. She uses transition colors, as needed, to merge one plane with another and applies green pastel to turn the forms.

For artists, pictures speak louder than words, so below is a series of photos, taken by Linda Light, which show the progression and development of this portrait.



Maryland Pastel Society | mdpscontact@gmail.com | <http://www.marylandpastelsociety.com>
P.O. Box 54
Riderwood, MD 21139

Copyright © 2013. All Rights Reserved.

 SafeUnsubscribe™



This email was sent to debmak@comcast.net by mdpscontact@gmail.com |
Instant removal with [SafeUnsubscribe™](#) | [Privacy Policy](#).
Maryland Pastel Society | P.O. Box 54 | Riderwood | MD | 21139