



Maryland Pastel Society

Winter Newsletter

January 2019

In This Issue

[Upcoming Events](#)

[Next Meeting](#)

[Featured Artist](#)

[Member News](#)

[Membership News](#)

MPS Board and Volunteers

President: Kim Stone
Vice President: Kathleen Risk
Treasurer: Mary Anne Warner
Recording Secretary: Lyn Laviana
Corresponding Secretary: Joyce Turk
Membership: Kathleen Risk
Workshops: Susan VanEseltine
Exhibitions: Susan Gleason
Events: Laurie Basham
SOP 2019: Mary Boeh
Web: Mary Boeh

Planning Calendar

Jan 26: Winter meeting, Gary J. Arthur Community Center, Glenwood
Mar 16: MPS Board Meeting
Apr 27: Spring meeting, Gary J. Arthur Community Center, Glenwood
May 29-Jun 1: 4-day Margaret Evans workshop, Havre de Grace
Jul 12-Sept 9: Artist Members Exhibit,

From the President

Greetings to all and Happy New Year!

Winter is here with its beautiful bare trees against cold blue-gray skies. Its quietude and stillness offer time to reflect and rest. This time of year I like to clean my pastels and boxes thoroughly, and make new pastels; things I never have time to do throughout the year. It's a good time to plan ahead for the new year. We on the board of the Maryland Pastel Society have some exciting events for you to add to your 2019 calendar.

Our winter general meeting will be held on January 26th. If you are an avid plein air painter or just like to experiment occasionally, you will enjoy **Tara Will's** demonstration on her technique with pastel painting *en plein air*. Her tips will surely enhance our appreciation for plein air and prepare us for our own attempts in the spring. Our spring general meeting falls on April 27th with **Jeri Greenberg** as demonstrator. Jeri is a member of the Master Circle of IAPS, as well as many other pastel societies. She discovered her love of pastels after careers in fashion design, textile design and graphic design. She now teaches weekly classes and gives demos and workshops regularly. We are sure to grow from hearing and watching this well-versed artist. More to come later on the other two general meetings' events, but their dates are July 13th and October 19th.

There are two fabulous workshops lined up. **Margaret Evans** will instruct a workshop on May 29th through June 1st in Havre de Grace. **Aline Ordman** will provide a 3-day workshop on November 14th through 16th. Both are renowned contemporary artists, famous for their skill in the medium of pastel as well as excellent workshop instructors.

This year we are planning a juried **Artist Members' exhibition**, July 12th through September 9th, at the Kentlands Mansion in Gaithersburg. Acceptance will count towards Signature Membership and there will be prizes and ribbons awarded.

Our **biennial national juried exhibition, Shades of Pastel**, takes place from November 16th through January 6th, 2020. This prestigious show draws accomplished pastellists from across the country. Aline Ordman will

Kentlands Mansion,
Gaithersburg

Jun 15: MPS Board
Meeting

Jul 13: Summer
meeting, Gary J. Arthur
Community Center,
Glenwood

Sept 14: MPS Board
Meeting

Oct 19: Fall meeting, Gary
J. Arthur Community
Center, Glenwood

Nov 14-16: 3-day Aline
Ordman workshop,
Rockville

Nov 16: SOP, Strathmore
Mansion, Rockville

Dec 15: MPS Board
Meeting

Directions to MPS
meetings

[Directions to our
meetings at the Gary J.
Arthur Community
Center at Glenwood](#)

be the juror and judge. This show will be held at the beautiful Strathmore Mansion in Rockville and we encourage you to enter.

We hope you take advantage of some or all of the exciting opportunities we offer you as a member of the Maryland Pastel Society. Get to know one another and introduce yourself to members of the board. Together we can learn and grow. Here's wishing 2019 brings you joyful pastel painting experiences and new creative insights.

See you on the 26th,
Kim Stone

Next Meeting: Winter 1/26/19

Our Winter General Meeting will be held **Saturday, January 26**, from noon to 4 pm at the Gary J. Arthur Community Center in Glenwood, Maryland.

At our winter meeting, you will be treated to a demo by our very own **Tara Will**. Tara graduated from Mount Saint Mary's University with a BA in Art and Philosophy. She specializes in working with pastels but also enjoys painting with oil, watercolor, and mixed media. Tara predominantly works *En Plein Air* meaning out in the open air. She always uses her own photography as reference in her studio paintings to infuse a sense of self and her own experience to share. Her work is currently represented by Gallery 99 located in Westminster, MD.



Recent plein air paintings by Tara Will.

Tara will demonstrate her fearless approach to pastel painting *en plein air* and fill us in on the process behind entering plein air competitions all over the country. We hope you can join us for this engaging and informative meeting. To learn more about Tara Will's accomplishments and to see more of her work visit tarawill.com .

Featured Artist: Dan Peck



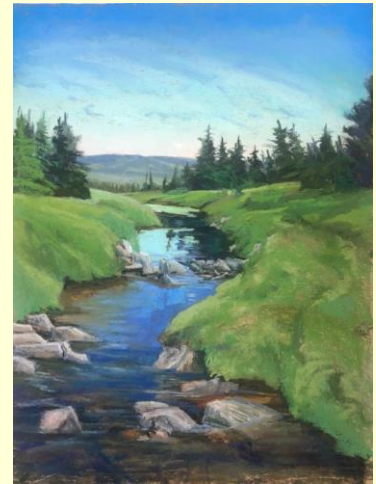
Dan painting at the Nancy King Mertz workshop in Boiling Springs, PA, 2018

A resident of West Virginia, Dan Peck rarely misses an opportunity to watch the sun rise. Dan's paintings of mountains, streams, fields, and farms reflect his love and awe of nature's beauty and his surroundings.

He notes the following artists as having influenced him on his art journey; Andrew Wyeth, The Impressionists, Vincent Van Gogh, Winslow Homer, George Inness, Constable, Edgar Payne, and contemporary Russian landscape painters.



"Antietam Battlefield" by Dan Peck

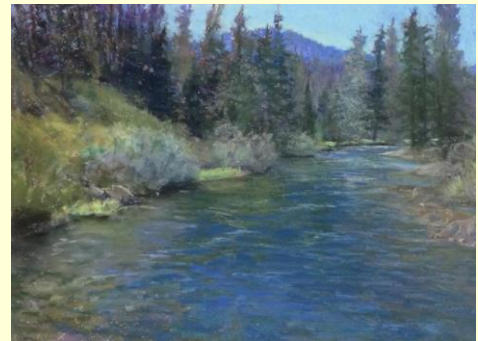


"Red Creek, Dolly Sods Wilderness, WV" by Dan Peck, 2018

Dan studied under the acclaimed Shepherd University faculty members Jones and Benedict in the early 80's, and has taken workshops with David Leffel, Albert Handell, Kim Lordier, and Lorenzo Chavez to name a few. Dan paints *en plein air* two to three times a week and says he wants his art to have an organic feeling, and to transport the nuances of the area he's painting to the viewer. Dan enjoys painting in pastels and in oils.



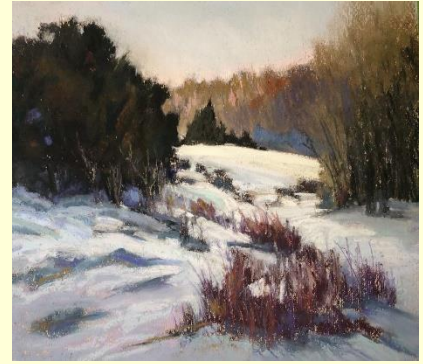
"Linganore Winery, MD" by Dan Peck 2018



"Bitterroot River, Hamilton, MT" by Dan Peck, 2016



"Plein air, Dolly Sods Wilderness, WV" by Dan Peck, 2016



"Plein air, field behind my house, WV" by Dan Peck, 2018

How to become a Featured Artist

Signature Members may sign up to be a Featured Artist by sending an email to mpsnews18@gmail.com. You will need to provide a write-up and five to seven images upon acceptance.

Also, Signature Members, if you would like to update your images on the MPS web page gallery, please contact Joyce Lister by email listerstudio@comcast.net.

Member News



by Mary Anne Warner

Mary Anne Warner was awarded the Jack Richeson Merchandise Award #1 at the Connecticut Pastel Society 2018 "Renaissance in Pastel" show for her painting "Rock Wall".

"Rock Wall"

Joanne Lamm is currently participating in a group art show at the Unitarian Universalist Congregation of Rockville. Her work, which includes several pastels, is on display until mid January 2019.



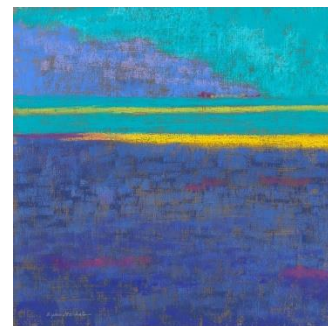
Painting by Joanne Lamm



"Island Reflections" by Susan Klinger

Susan Klinger had her pastel "Island Reflection, Guana Cay" accepted in the 90th Grand National Exhibition of the American Artists Professional League held in November in NYC. Susan also had two paintings exhibited for the 20th Anniversary Exhibit of the Montgomery County Guild of Professional Artists (MCGOPA) at The Henry Gallery of Penn State Great Valley, September to December 2018. Also with MCGOPA, Susan is exhibiting in "Small Work - Big Impact" at 431 Art Gallery in King of Prussia, PA through January 2019. Finally, Susan will have a solo display of her paintings from January through March 2019 at the Abington-Lansdale Hospital in Lansdale, PA.

Lynn Goldstein's painting "Terrain" was selected for exhibition in the Pastel Society of America's exhibition "Enduring Brilliance," and with this entry, Lynn was awarded Signature Membership status in the Society. In 2018, Lynn's work was selected for exhibition in the Director's Collection and the Founder's Exhibition at the Workhouse Arts Center in Lorton, VA. Lynn had a solo exhibition of 30 paintings in Charleston, WV. Additionally, Lynn's work "Diaspora," an installation exploring Jewish immigration to the US, was selected to be included in an online exhibition and quarterly art journal through Dab Art, a gallery in Los Angeles, CA. Finally, Lynn will be teaching a pastel and/or oil painting workshop in Tuscany again in 2019 from October 5-12. To find out more about that workshop, please visit Lynn's website at www.lynngoldstein.com.

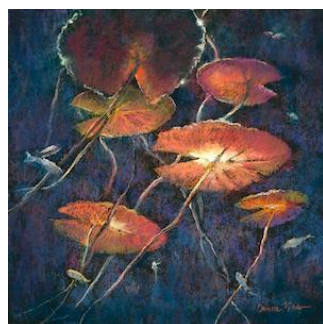


"Terrain" by Lynn Goldstein

In November 2018, **Mary Moores** won the Best of Show prize at the Hanover Arts Guild's 50th annual juried fall show in Hanover PA. Her winning pastel painting of a local landscape is titled "Nunda Fruit Farm in Spring."



"Nunda Fruit Farm in Spring" by Mary Moores



"Beneath the Lily Pads" by Denise Vitolo

Denise Vitollo received the Holbein Artist Materials Award for her painting "Laundry Day" at the "Palette to Palate Exhibition" in September, 2018. Her work "Hidden" was included in the Philadelphia Watercolor Society's 118th Anniversary International Works on Paper at the Wayne Art Center in Wayne, PA, from October to November 2018. Her painting "Toward the Light" has been juried into the Degas Pastel Society's 17th Biennial National Exhibit at the Hammond Regional Art Center in Hammond, LA. Her painting "Beneath the Lily Pads" was accepted into Connecticut Pastel Society's "Renaissance in Pastel" Exhibition 2018.

Helen Wood's painting "Promised Land" was accepted into the 24th Annual Friends of the Yellow Barn Members Show, Dec 8-9 and 15-16, 2018. The view is from Mt. Nebo in Jordan looking towards Jerusalem.



"Promise Land" by Helen Wood



"Blaze" by Deborah
Maklowski"

In September, **Deborah Maklowski** exhibited six colored pencil/mixed media drawings in an international show held in Chateau Grouchy (pronounced "Grooshy") in the town of Osny (pronounced "O-nee"), about 20 miles northwest of Paris. Featuring the work of 16 American, French, German, and Spanish artists, the exhibit was part of a cultural exchange under the auspices of a sister-cities agreement that includes Columbia / Howard County, MD.

Susan Gleason is teaching Pastel Painting Classes for beginners and intermediate levels at the Columbia Art Center. Eight week sessions on Tuesday mornings January 15th through March 5th. Go

to <https://www.columbiaassociation.org/facilities/columbia-art-center/> for more information.



"The Curious One" by Susan Gleason



Painting by Barrie Leigh

And last but not least, **Barrie Leigh** shared this at the end of December, 2018. "After attending the recent MPS quarterly meeting, I was challenged to demonstrate reuse of a color palette. My first selection was a colorful Autumn scene of aspens in the Rockies, from Patrick Matthew's extended series 'Seasons'. Reviewing photos for my next painting from the same pastel palette, a cheerful scene of two horses caught my attention. Almost unnoticed, was the sleigh-tucked well away behind the big Belgian draft horses. Painting my own cards for seasonal greetings has not appealed to me in the past, but perhaps it's appropriate for me to use my first unwitting effort to . . . [wish] Seasonal

Greeting to all of you in the Maryland Pastel Society! Here's to a lively 2019, and may there be a jingle all the way."

Membership Update

Maryland Pastel Society is very happy to welcome six new members.

Karen Lamis
Louis McCauley
Dorna Richardson
Germain Connolly
Victoria Lohn
Jill Smithson

Time to Renew your MPS Membership

Maryland Pastel Society 2019 Dues are due.

Deadline: February 1, 2019
Signature Member dues are \$35.00
Artist Member dues are \$25.00.

New members who joined MPS after October 1, 2018 are considered paid up through 2019.

Please renew on or before February 1, 2019 in order to continue your membership in good standing. You may pay via **PayPal** or securely with a credit or debit card. Just go to the MPS website, marylandpastelsociety.com and click on Membership on the left menu. Please save a copy of your PayPal receipt for your records.

If you prefer, checks should be made payable to the "Maryland Pastel Society" with "dues 2019" on the memo line. Send payment to:
MPS Treasurer, 504 Lloyds Lane Alexandria, VA 22302.

Be sure to let us know of any changes we should be aware of with respect to your address, phone number, or e-mail address so we can keep you up to date on our happenings. Your information is used strictly within MPS.

If you do not wish to renew your membership, please email dra1950@comcast.net. This will eliminate sending you reminders and emails after February 1st.

Past Events - Tony Allain Workshop "Chasing the Light" 10/18-10/19



Tony Allain as he instructed us.

On October 18-19, 2018, MPS hosted a workshop with **Tony Allain** at Artist and Makers Studio 2 in Rockville MD

Award winning painter, author and instructor Tony Allain has been an artist for over 40 years and was born and raised in the Channel Islands off the coast of Normandy. In 2006 he was accepted as a Master of the Pastel Artists of New Zealand after moving there. His work can be found in many leading galleries as well as private and corporate collections worldwide. He now resides in the ancient seaside town of Marazion in West Cornwall where he loves to capture the unique clarity of light on the peninsula of the

West Country.

The color and light of early mornings and late afternoons was the reason he became a landscape painter. He believes in a complete understanding of his surroundings to capture the essence of the scene.



Tony showed us sketches in some of his sketchbooks and began to interpret one with a black marker and a few pastel strokes on a 40% warm orange paper. In twenty-five minutes he had produced a beautiful painting from his sketch (right) with loose strokes and vibrant color.

He stresses keeping up with one's drawing skills in order to maintain confidence needed to paint. Photos should be used purely as reference material. Tony Allain sketches wherever he goes. He had many sketchbooks to share with us. "Drawing is the ABC of painting," he says. "When you are sketching you are constantly taking down information; you are loosening up." Often, he first limbers up with felt tip pens.

On the first day he started out with Pastel Premier paper and a giant black marker! He soon had our undivided attention as he painted a version of his painting of a girl with red hair at an exhibition. He pointed out that heads and shoulders are fairly all the same level when depicting a crowd. The feet are the objects that deviate in space to show distance. Tony asks the viewer to add the "bits that I've left out." The viewer can fill in the detail.



Tony was sketching at an exhibition (left) when he was taken by the striking red hair of a visitor. In the workshop, we practiced with large markers, making shapes to fashion into crowds of people with strokes of color placed here and there to achieve a sense of

distance.

Tony states, "Put the power into the focal point." Tony Allain is not interested in detail at all! "Paint what you see. If you see a shape, paint it. Make a mark and never touch it again." He thinks painting is 90% observation and 10% application. He paints dark to light and fat over lean, calling the heavy top layer the "lemon cake." We experimented with his ideas as he had us painting a picture with only three pastels and another with only 250 marks. Some of us tried working with gouache, watercolor and acrylic underpainting, which Tony says all work well under pastel.



Tony also demonstrated his quick sketch-booking approach with gouache and felt tip pens. (left)

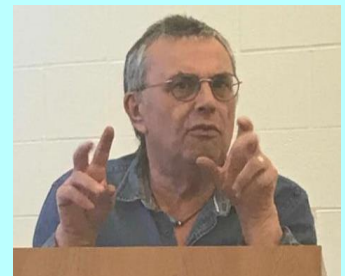
Every inspiring minute of this two-day workshop was filled with useful information and camaraderie among us as we learned new techniques and the artistic outlook of the very accomplished artist, Tony Allain. See more of his work at tonyallainfineart.com.



One of the bold, fresh, utterly captivating paintings from our workshop by Tony Allain.

Past Events - Fall General Meeting 10/20/18

Well-known and self-taught artist, Tony Allain treated attendees of our MPS fall general meeting to a demonstration and informative talk. Some of us had been with him two days before at his MPS workshop titled "Chasing the Light." His intent was to help us to become less tight in our work.



He was born on the Isle of Guernsey and always lived near the ocean. Marine subjects are in his blood. His work can be found in the Marine Society of London's Maritime Museum, Guernsey, and

Queen Mary II, Cunard Liner. Tony Allain loves to paint Color and Light. He paints fast and the result is fresh and accurate.



This sailboats-at- sunset painting (left) took Tony no time at all as he showed us how to make marks and let them stand. His touch is light at first, giving him the ability to layer heavier marks of color.

He cautioned us to thoroughly know our surroundings before we begin a painting. It is important for us to keep up our drawing skills. Photos are purely for reference. Tony talked about the joyous presence of light to be noticed especially during the early morning or late afternoon. Even though his marks are fewer than some, they are precise and well thought out with preliminary sketching and observation.



Starting out with a few dark shapes, sometimes laid in with marker (far left), he lays down the next values with color, while not paying much attention to detail, as the composition begins to have a flow. Tony often keeps his paper visible as a useful middle value.



Lighter values are thoughtfully added as the final painting of docked boats (below) takes shape. Note the contrast where the brightest-light shapes are placed next to darker ones.

Tony likes to limber up with felt tip pens in sketchbooks and tinted Pastel Premier paper before he gets into painting. He says we need to have "Easel Knowledge." By this he means gaining the confidence to make a mark and leave it, because

we have prepared well ahead of time by making sketches and drawings of an idea. "You have to get your pastels out of the box" no matter how pretty they look unused and clean. He cautions that if you put the "wow-factor" in too early you may contaminate the whole. This only comes with painting often and learning what works. Learn how to squint and simplify shapes.

Leave something to the imagination and let the viewer fill in the "bits and pieces."



It's amazing how much work he produces in a very short time. His demonstrations cover three or four paintings in one session as he deftly creates a believable image of a boat, a building, or people with a few well-placed strokes. Even those who did not attend the workshop experienced the full affect of his technique, and were treated to new

and vibrant works painted with looseness and accuracy.

Tony Allain's work is regularly featured in *Artist* magazine, *Pastel Journal*, and *Pratique des Arts*. See more of his work at tonyallainfineart.com.

Upcoming MPS Workshops

Margaret Evans Landscape Workshop

May 29 - June 1

Havre de Grace, MD

This 4-day plein air pastel workshop will take place at several scenic locations such as the Steppingstone Farm Museum, the old Gristmill, and downtown Havre de Grace by the shores of the Chesapeake Bay.

Margaret Evans is a Scottish contemporary artist and is one of the UK's leading art instructors. She is a fully qualified graduate of Glasgow School of Art, DA, and teaching graduate of London University, ATC. Margaret is a Signature member of the Pastel Society of America, Pastel Artists of Canada, Art du Pastel en France and LAI.

Her book, *Pastels Unleashed*, is a favorite resource for pastellists.

Margaret is an excellent, inspiring workshop instructor for all levels.

Generous with information and help, she provides students with a great deal of individual attention. View her work at <http://www.shinafoot.co.uk>

Aline Ordman Workshop

October 14 - 16

Artists and Makers Studio 2, Rockville, MD

This 3-day indoor workshop will take place days before our biennial national exhibition, "Shades of Pastel." Aline Ordman will be our distinguished Juror for the exhibit. She received her BFA at Cornell University, and continued her training at the Academy of Art College in San Francisco, earning a degree in Illustration. Aline is a Master Pastelist with the Pastel Society of America, a Signature Member of the American Impressionist Society and a Master Circle Pastelist with the International Association of Pastel Societies (IAPS). She was featured in an article in the February issue of the *Pastel Journal* and she has been honored with awards at the 33rd, 34th and 38th Annual Juried Shows of the Pastel

Society of America in New York City. View her work at aordman@sover.net

Upcoming MPS Exhibits

MPS Juried Artist Members Exhibition, "New Perspectives"

July 12 to September 9, 2019 at the Kentlands Mansion in Gaithersburg, MD.

Drop off date for framed artwork: July 8. Acceptance will count towards Signature Membership and there will be prizes and ribbons awarded. More information and prospectus will be sent out soon.

MPS Biennial National Juried Exhibition, "Shades of Pastel 2019"

November 16, 2019 to January 6, 2020 at Strathmore Mansion, Rockville, MD

Drop off date for framed artwork: October 18, shipped items must arrive October 21-22.

Juror and Judge: Aline Ordman. See more information below.

Shades of Pastel (SOP)

We are excited to announce that the Maryland Pastel Society "Shades of Pastel 2019" National Juried Exhibition will return to the Strathmore Mansion in North Bethesda, Maryland. The exhibition will be from November 16, 2019 through January 5, 2020. Entry will be via onlinejuriedshows.com and the prospectus will be posted at the end of March 2019.

Our juror and judge for the exhibition will be Aline Ordman. Aline lives in New England and is a Master Pastelist with the Pastel Society of America, a Signature Member of the American Impressionist Society and a Master Circle Pastelist with the International Association of Pastel Societies (IAPS). She has juried the Pastel Society of America's National Juried show; The Pastel Journal's Top 100 Animal and Wildlife Competition, the Pastel Society of New Mexico's Annual Juried Show and the Adirondack Plein Air Festival Awards. She is also well known among plein air painters and is a popular instructor. Visit her web site at alineordman.com.

More information about the Call for Entries and Prospectus will be posted in March 2019. Be sure to watch for emails and check the web page for updates.

Strathmore is a premier art institution of the mid-Atlantic region, hosting more than two dozen exhibitions a year in its historic Mansion. Strathmore is a nonprofit multi-disciplinary arts center and presenting organization based one-half mile outside the Capital Beltway in North Bethesda, Maryland. Best known for performances and events at the Music Center at Strathmore, the organization has been presenting accessible, affordable visual and performing arts in the smaller Mansion at Strathmore and all over its 16-acre site since 1981. Strathmore also presents throughout the community and at a new 250-seat venue, AMP, at Pike & Rose.

In conjunction with Shades of Pastel 2019, our juror and judge, Aline Ordman, will conduct a 3-day indoor workshop from November 14-16. More information will be available at our Spring General meeting in April 2019.

Other Upcoming Opportunities

Third Arizona Pastel Artists Association Open Exhibition

April 9 to 23, 2019 at the Sedona Art Center, Sedona, Arizona
Awards judge, Tony Allain, will be doing a demo on the reception morning and a three day workshop during the first 3 days of the show.

Jurors: Jacob Aguiar and Richard McKinley

Over \$6000 in award prizes.

Deadline for entry: Feb.19, 2019 at www.apaa.wildapricot.org

Make it a habit to regularly check onlinejuriedshows.com for a range of current exhibits from across the country that you may be interested in entering. Simply click on any one of a number of listings for more information and a prospectus. Our own "SOP 2019" will be listed there this spring.

MPS Needs You

Get Involved!

To keep our organization healthy and happy we all need to participate. Everything from bringing snacks to heading up committees is an opportunity to get involved. Are you interested in serving on the board? Please contact a board member if you are willing to contribute your time and talents.

At the moment, we would especially like to have two people step up to help with refreshments at general meetings. That entails bringing beverages, cups and paper products, and helping to clean up the food table after the meeting. Thanks.

Parting Thought

"The painting has a life of its own. I try to let it come through"

--Jackson Pollock

Maryland Pastel Society | mdpastels@gmail.com | <http://www.marylandpastelsociety.com>

P.O. Box 54
Riderwood, MD 21139